

DOEDCI
REBEL®



America's
Favorite
Fishing
Lures

2

0

0

7

America's Favorite Fishing Lures



It has been more than four decades since Rebel Lures founder, George Perrin, began making “America’s Favorite Fishing Lures.” The company began in 1961 as an injection molder that mostly made parts for other products – products that ranged from refrigerators to kitchen cabinets. However, Perrin was an avid angler, so he set out to create a minnow-imitating fishing lure that would be molded from plastic and therefore would offer consistent action and unmatched durability. The result was the 3 1/2 inch (F10) Rebel Minnow, and the new minnow lure’s success came almost overnight. Soon demand began growing for other sizes and styles of the already legendary minnows, and it wasn’t long before anglers began asking for models that would sink or dive deep, topwater poppers, and eventually crankbaits. There was no turning back for the young lure company, which was (and still is) based in Fort Smith, Arkansas and was named for the mascot of Fort Smith’s Southside High School.

A host of Rebel lures, including the original Rebel Minnow, have become legendary among veteran anglers and remain popular today. The Rebel Pop-R and Wee-R have won countless regional and national bass fishing tournaments and are staples in pro angler’s boxes, and many stream fishermen wouldn’t consider wading knee-deep in a river without several Rebel Crawfish. Meanwhile Rebel critter baits, like Big Ants and Wee-Frogs, consistently rank among Rebel’s most popular lures because they produce so many different kinds of fish and are very easy to fish effectively. Today, Rebel only makes fishing lures, but at times the company has made tackle boxes, trolling motors and even boats, including the boats that competitors fished from during the first Bassmaster® Classic.



Back by Popular Demand.

Jumpin'® Minnow™

The 2 1/4 inch T10 Rebel Jumpin' Minnow has re-surfaced after a period of obscurity, during which time veteran anglers guarded every 2 1/4 inch Jumpin' Minnow vigilantly. A Jumpin' Minnow glides from side to side, skimming the surface like a baitfish fleeing a furious predator, and its old-style lead rattle creates a distinctive call that beckons fish from far away. It casts like a bullet and ranks among the easiest to work of all walking baits.

New!
T10



| Model | Name | Size(In) | Size(cm) | Weight(oz) | Weight(g) | Hook Size | Cranking Depth(ft) |
|-------|-----------------|----------|----------|------------|-----------|-----------|--------------------|
| T10 | Jumpin'® Minnow | 2 1/4 | 8.89 | 3/8 | 8.8 | #6 | Topwater |
| T20 | Jumpin'® Minnow | 4 1/2 | 11.4 | 1/2 | 23 | #2 | Topwater |

| Model | Colors Available |
|-------|---|
| T10 | 00, 01, 03, 00CB |
| T20 | 00S, 01S, 03S, 195 – All T20s have Saltwater Hooks. |

Count Down To Hook Up.



TD4

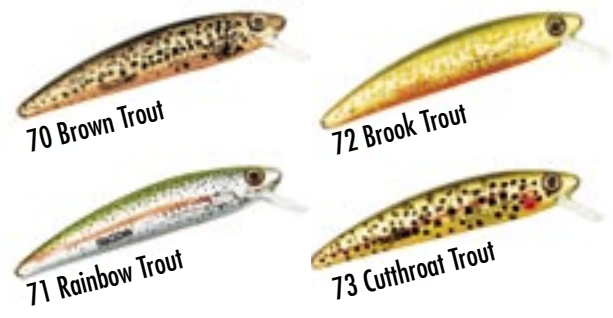
| Model | Name | Size(In) | Size(cm) | Weight(oz) | Weight(g) | Hook Size | Cranking Depth(ft) |
|-------|------------------|----------|----------|------------|-----------|-----------|--------------------|
| TD47 | Tracdown® Minnow | 2 1/4 | 5.70 | 1/8 | 3.2 | #10 | 0-2* |

*depths are approximate and obtained using 4lb test Silver Thread® line

| Model | Colors Available |
|-------|------------------|
| TD47 | 70, 71, 72, 73 |

Tracdown® Minnow™

Unequaled in action and productivity, the Tracdown sinking minnow sinks at a rate of one foot per second. This allows the angler to count his lure down and retrieve it at the exact depth of located suspended fish.



You've seen them spit, but have

You heard Grasshoppers Pop?



P73

Crickhopper Popper™

You've fished with real grasshoppers, now fish with this: the Rebel® Crickhopper Popper™. It's the first "popping" critter of its kind. This realistic ultralight will cause such a commotion that you'll catch fish all day long. Twitch it to make it "pop" across the water.

| Model | Name | Size (In) | Size (cm) | Weight (oz) | Weight (g) | Hook Size | Cranking Depth (ft) |
|-------|---------------------|-----------|-----------|-------------|------------|-----------|---------------------|
| P73 | Crickhopper Popper™ | 1 3/4 | 4.5 | 3/16 | 4.2 | #10 | Topwater |

Model Colors Available

P73 432, 433, 434, 435, 436, 437, 438



Half Grasshopper, Half Cricket.



F73

F73M

Crickhopper™

Catching fish for almost 20 years — the Crickhopper™ resembles crickets and grasshoppers during different stages of the year and can be used as a topwater lure or as a crankbait.

| Model | Name | Size (In) | Size (cm) | Weight (oz) | Weight (g) | Hook Size | Cranking Depth (ft) |
|-------|--------------|-----------|-----------|-------------|------------|-----------|---------------------|
| F73M | Bighopper | 1 3/4 | 4.95 | 1/4 | 3.79 | #10 | 0-3 |
| F73 | Crickhopper™ | 1 1/2 | 3.81 | 3/32 | 2.8 | #14 | 0-3 |

*depths are approximate and obtained using 12lb test Silver Thread® line

Model Colors Available

F73M 56, 94, 95, 96, 97, 314

F73 56, 94, 95, 96, 97, 314



Crickhopper design protected by patent number 312,859.

The configuration of the Rebel Crickhopper is the exclusive property of EBSCO Industries and is protected by U.S. Trademark Registration Number 74/006,998.



The Original Crawfish.

| Model | Name | Size (In) | Size (cm) | Weight (oz) | Weight (g) | Hook Size | Cranking Depth (ft) |
|-------|---------------------|-----------|-----------|-------------|------------|-----------|---------------------|
| D74 | Big Craw | 2 5/8 | 6.65 | 7/16 | 11.6 | #4 | 8-10* |
| D76 | Deep Wee | 2 3/8 | 5.84 | 3/8 | 9.5 | #6 | 8-10* |
| F76 | Wee-Crawfish™ | 2 | 5.08 | 1/5 | 6.0 | #8 | 5-7** |
| D77 | Deep Teeny Wee | 1 1/2 | 3.81 | 1/9 | 3.0 | #14 | 4-5** |
| F77 | Teeny Wee-Crawfish™ | 1 1/2 | 3.81 | 1/10 | 2.8 | #14 | 2-3** |

*using 10-12lb test line, **using 10lb test line, ***using 6lb test line Depths approximate, results achieved using Silver Thread® fishing line.

| Model | Name | Colors Available |
|-------|---------------------|--|
| D74 | Big Craw | 34, 35, 60, 65, 75 |
| D76 | Deep Wee | 34, 35, 40, 60, 63, 65, 67, 75, 84 |
| F76 | Wee-Crawfish™ | 34, 35, 40, 60, 63, 65, 67, 75, 84 |
| D77 | Deep Teeny Wee | 34, 35, 40, 60, 65, 67, 75, 84 |
| F77 | Teeny Wee-Crawfish™ | 01, 34, 35, 40, 56, 57, 60, 63, 65, 67, 68, 75, 84 |

Rebel® Crawfish™

The Rebel® Crawfish™ is the original realistic crawfish crankbait. These baits mimic a fleeing crawfish. The distinct, pulsating action is irresistible and extremely effective in rivers and streams.

The configuration of the Rebel Crawfish is the exclusive property of EBSCO Industries and are protected by U.S. Trademark Registration Number 1,601,036.





Little Lures Land Lots of Fish.

Rebel® Ultralights

What was the first lure you ever used? For many, it was one of Rebel's ultralights. In fact, it is likely no other line of lures has simultaneously caught as many fish and fishermen. Whether an expert wading their favorite smallmouth stream or a young angler fishing along the bank of a nearby pond, Rebel® ultralights produce fish for everyone, every time!

| Model | Name | Size (In) | Size (cm) | Weight (oz) | Weight (g) | Hook Size | Cranking Depth (ft) |
|-------|-----------------------|-----------|-----------|-------------|------------|-----------|---------------------|
| S75 | Cat'r Crawler® | 1 5/8 | 3.98 | 5/64 | 2.2 | #14 | Sinker |
| F71 | Wee Frog | 2 | 5.08 | 3/8 | 10.5 | #6 | 3-4* |
| F70 | Teeny-Wee Frog | 1 1/2 | 3.81 | 1/8 | 2.5 | #14 | 0-2* |
| F67 | Tadfry | 1 1/4 | 3.18 | 1/16 | 1.5 | #12 | 0-3* |
| F47 | Floating Ghost Minnow | 2 1/4 | 5.65 | 3/32 | 2.8 | #10 | 0-2* |
| S47 | Susp. Ghost Minnow | 2 1/4 | 5.65 | 1/8 | 3.1 | #10 | 0-2* |
| S72 | Hellgrammite | 1 3/4 | 4.45 | 3/32 | 2.4 | #14 | Sinker |

*depths are approximate and obtained using 6lb test Silver Thread® line

The configuration of the Rebel Wee Frogs are the exclusive property of EBSCO Industries and are protected by U.S. Trademark Registration Number 1,603,880.

The configuration of the Rebel Tadfry are the exclusive property of EBSCO Industries and are protected by U.S. Trademark Registration Number 351,211.

Model Colors Available

All Available in all colors shown in each model's corresponding color chart.





The Bumble Bug... Busy Buzzing Around.

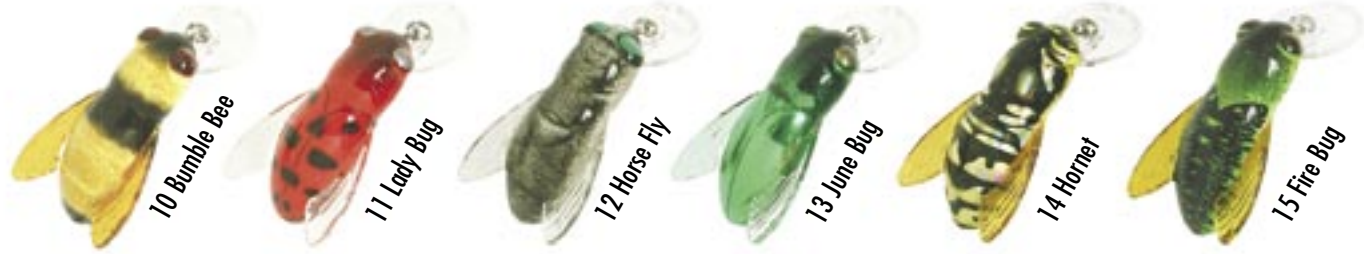
Bumble Bug®

Bugs on the surface attract fish, and the Rebel™ Bumble Bug® is no exception. This ultralight lure features a wide-wobbling action. It can be fished as a topwater lure or as a crankbait. Twitch it. Crank it. Pop it.

| Model | Name | Size(In) | Size(cm) | Weight(oz) | Weight(g) | Hook Size | Cranking Depth(ft) |
|-------|-------------|----------|----------|------------|-----------|-----------|--------------------|
| F74 | Bumble Bug® | 1 1/2 | 3.7 | 7/64 | 3.0 | #14 | 0-2* |

*depths are approximate and obtained using 4lb test Silver Thread® line

| Model | Colors Available |
|-------|------------------------|
| F74 | 10, 11, 12, 13, 14, 15 |



And the Ants come Marching In.



Big Ant™

Fish love to eat ants, and they'll love eating the Rebel® Big Ant™. The Big Ant™ is an ultralight lure that features loud, fish-attracting rattles and a wide-wobbling action. It can be fished as a topwater lure or as a crankbait.

| Model | Name | Size(In) | Size(cm) | Weight(oz) | Weight(g) | Hook Size | Cranking Depth(ft) |
|-------|----------|----------|----------|------------|-----------|-----------|--------------------|
| F45 | Big Ant™ | 1 1/4 | 3.13 | 1/8 | 2.7 | #14 | 0-2* |

*depths are approximate and obtained using 4lb test Silver Thread® line

| Model | Colors Available |
|-------|------------------------------|
| F45 | 421, 422, 423, 424, 425, 426 |



Wee-R[®] finding Fishⁱⁿ two Zones.



F93



D93

| Model | Name | Size (In) | Size (cm) | Weight (oz) | Weight (g) | Hook Size | Cranking Depth (ft) |
|-------|-------------------------|-----------|-----------|-------------|------------|-----------|---------------------|
| D93 | Deep Wee-R [®] | 2 | 5.08 | 3/8 | 10.5 | #6 | 8-10 |
| F93 | Wee-R [®] | 2 | 5.08 | 3/8 | 10.0 | #6 | 4.5-6 |

Depths are approximate and obtained using 12lb test Silver Thread[®] line

| Model | Colors Available |
|-------|--|
| D93 | 01, 03, 33*, 34*, 35*, 36*, 37*, 38*, 364, 390 |
| F93 | 01, 03, 33*, 34*, 35*, 36*, 37*, 38*, 364, 390 |

*Matte Finish

Rebel[®] Wee-R[®]

A long time classic, the Wee-R[®] has a great wiggle and is easy to retrieve. Bass anglers use the Wee-R[®] as a fish locator around rocks, stumps and submerged timber...they'll find them every time!



Good Old Crankbaits Never Die.



Humpback®

The classic shape of the Humpback produces fish year after year. As a shallow runner, the Humpback® is effective when fished above or around aquatic vegetation and is great for schooling fish.

| Model | Name | Size (In) | Size (cm) | Weight (oz) | Weight (g) | Hook Size | Cranking Depth (ft) |
|-------|-----------|-----------|-----------|-------------|------------|-----------|---------------------|
| F25 | Humpback® | 1 3/4 | 4.45 | 1/4 | 7.0 | #6 | 2-4* |

*depths are approximate and obtained using 8lb test Silver Thread® line

| Model | Colors Available |
|-------|------------------|
| F25 | 01, 02, 03 |



Lookin' for a Buzz?



| Model | Name | Size (In) | Size (cm) | Weight (oz) | Weight (g) | Hook Size | Cranking Depth (ft) |
|-------|--------------|-----------|-----------|-------------|------------|-----------|---------------------|
| T4 | Buzz'n Frog® | 2 1/2 | 6.35 | 1/2 | 14.0 | 1/0 | topwater |

| Model | Colors Available |
|-------|------------------|
| T4 | 60, 61, 62, 66 |



Buzz'n Frog®

The Buzz'n Frog® is a buzz bait in disguise, the only difference being that when you stop the retrieve, this lure floats head up just like a frog. The free spinning rear legs churn the water's surface and the semi-weedless rear hooks easily slip through heavy grass, weeds and moss.



| Model | Name | Size (In) | Size (cm) | Weight (oz) | Weight (g) | Hook Size | Cranking Depth (ft) | Trolling Depth (ft) |
|-------|-------------------|-----------|-----------|-------------|------------|-----------|---------------------|---------------------|
| D20 | Spoonbill | 4 1/2 | 11.4 | 1/2 | 14 | #4 | 7-9 | 14.4 |
| DJ30 | Jointed Spoonbill | 5 1/2 | 13.97 | 3/4 | 21 | #2 | 8-10 | 16.9 |

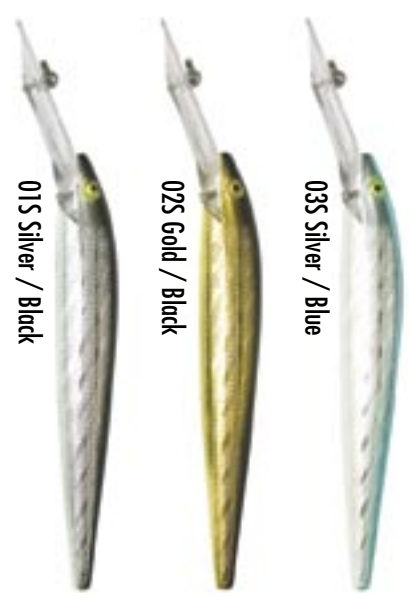
*depths are approximate and obtained using 10lb test Silver Thread® line (trolling depths measured 120ft back with .0134" diameter line)

| Model | Colors Available |
|-------|------------------|
| D20 | 01S, 03S |
| DJ30 | 01S, 02S, 03S |

Spoonbill Minnow

The Rebel® Spoonbill Minnow is equipped with super-strong corrosion resistant hooks and a tight defined wiggling action. It digs down into a variety of waters catching several species.

Spoonbills Dig Down a little Deeper.





Live Bait only wish they looked this Good.

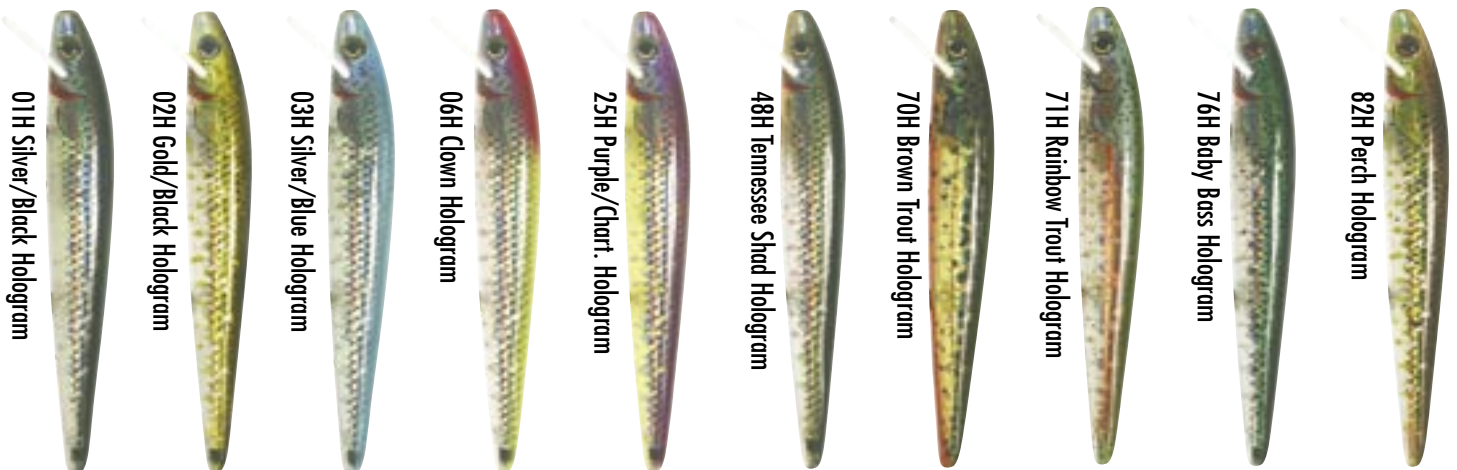
| Model | Name | Size (In) | Size (cm) | Weight (oz) | Weight (g) | Hook Size | Cranking Depth (ft) |
|-------|--------|-----------|-----------|-------------|------------|-----------|---------------------|
| F20 | Minnow | 4 1/2 | 11.53 | 3/8 | 10.2 | #4 | 0-3* |
| F10 | Minnow | 3 1/2 | 8.93 | 5/16 | 8.5 | #6 | 0-3** |
| F50 | Minnow | 2 1/2 | 6.35 | 9/64 | 3.9 | #10 | 0-2*** |
| F49 | Minnow | 1 5/8 | 4.08 | 3/32 | 2.3 | #12 | 0-2**** |

*using 10lb test line, **using 8lb test line, ***using 6lb test line, ****using 4lb test line Silver Thread® line used for all results.

| Model | Colors Available |
|-------|--|
| F20 | 01H, 02H, 03H, 06H, 25H, 48H, 76H, 82H |
| F10 | 01H, 02H, 03H, 06H, 25H, 48H, 76H, 82H |
| F50 | 01H, 02H, 03H, 70H, 71H |
| F49 | 01H, 02H, 03H, 70H, 71H |

Rebel® Holographic Minnow

Rebel® color technicians designed 10 brilliant patterns that adorn four popular sizes of its minnows. Complete with realistic fish eyes, the Holographic Rebel® Minnows feature a “live-bait” look that offers broken-scale patterns and touches of iridescence.



01H Silver/Black Hologram

02H Gold/Black Hologram

03H Silver/Blue Hologram

06H Clown Hologram

25H Purple/Chart. Hologram

48H Tennessee Shad Hologram

70H Brown Trout Hologram

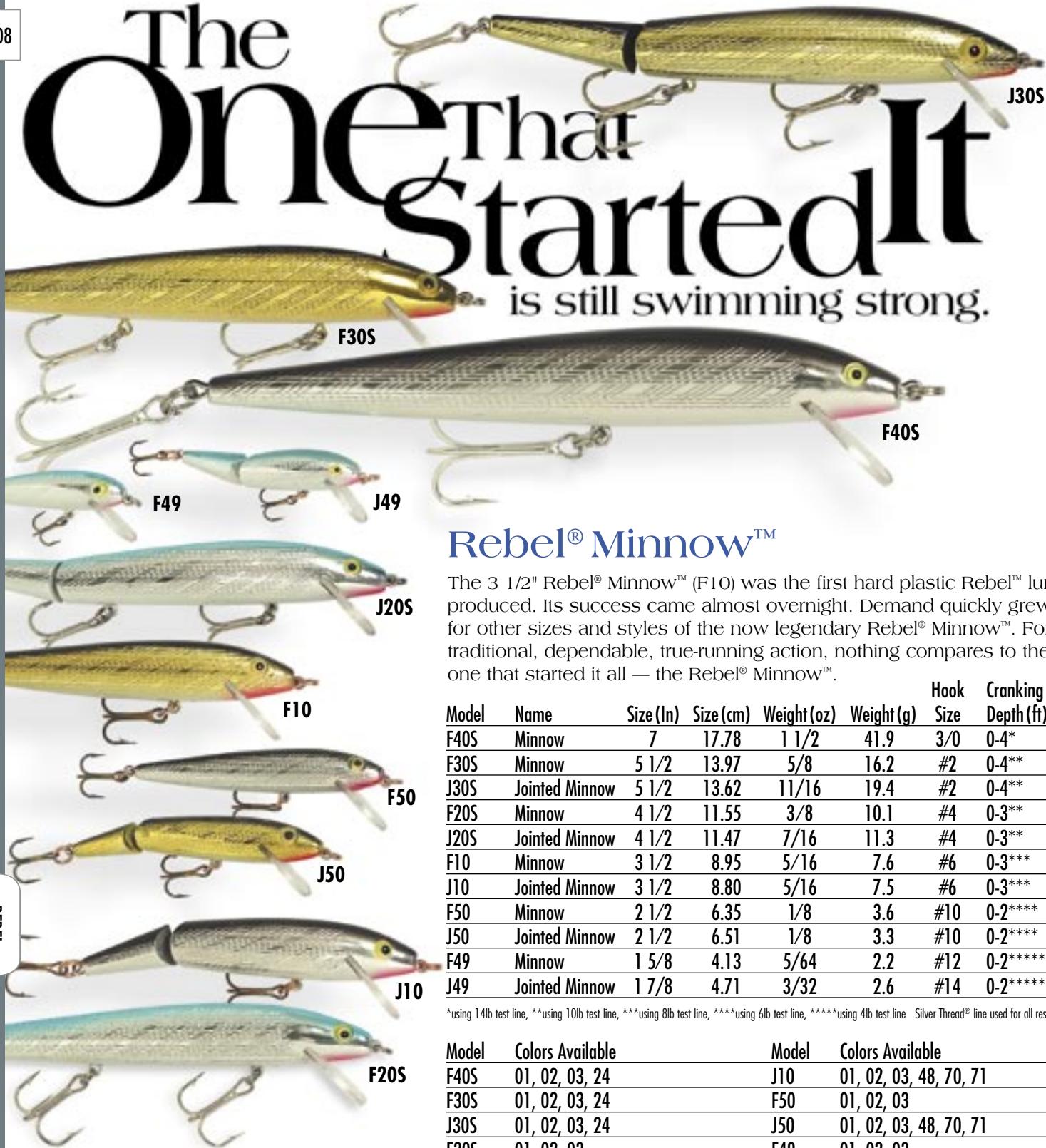
71H Rainbow Trout Hologram

76H Baby Bass Hologram

82H Perch Hologram

The One That Started It

is still swimming strong.



Rebel® Minnow™

The 3 1/2" Rebel® Minnow™ (F10) was the first hard plastic Rebel™ lure produced. Its success came almost overnight. Demand quickly grew for other sizes and styles of the now legendary Rebel® Minnow™. For traditional, dependable, true-running action, nothing compares to the one that started it all — the Rebel® Minnow™.

| Model | Name | Size (In) | Size (cm) | Weight (oz) | Weight (g) | Hook Size | Cranking Depth (ft) |
|-------|----------------|-----------|-----------|-------------|------------|-----------|---------------------|
| F40S | Minnow | 7 | 17.78 | 1 1/2 | 41.9 | 3/0 | 0-4* |
| F30S | Minnow | 5 1/2 | 13.97 | 5/8 | 16.2 | #2 | 0-4** |
| J30S | Jointed Minnow | 5 1/2 | 13.62 | 11/16 | 19.4 | #2 | 0-4** |
| F20S | Minnow | 4 1/2 | 11.55 | 3/8 | 10.1 | #4 | 0-3** |
| J20S | Jointed Minnow | 4 1/2 | 11.47 | 7/16 | 11.3 | #4 | 0-3** |
| F10 | Minnow | 3 1/2 | 8.95 | 5/16 | 7.6 | #6 | 0-3*** |
| J10 | Jointed Minnow | 3 1/2 | 8.80 | 5/16 | 7.5 | #6 | 0-3*** |
| F50 | Minnow | 2 1/2 | 6.35 | 1/8 | 3.6 | #10 | 0-2**** |
| J50 | Jointed Minnow | 2 1/2 | 6.51 | 1/8 | 3.3 | #10 | 0-2**** |
| F49 | Minnow | 1 5/8 | 4.13 | 5/64 | 2.2 | #12 | 0-2***** |
| J49 | Jointed Minnow | 1 7/8 | 4.71 | 3/32 | 2.6 | #14 | 0-2***** |

*using 14lb test line, **using 10lb test line, ***using 8lb test line, ****using 6lb test line, *****using 4lb test line Silver Thread® line used for all results.

| Model | Colors Available | Model | Colors Available |
|-------|------------------------|-------|------------------------|
| F40S | 01, 02, 03, 24 | J10 | 01, 02, 03, 48, 70, 71 |
| F30S | 01, 02, 03, 24 | F50 | 01, 02, 03 |
| J30S | 01, 02, 03, 24 | J50 | 01, 02, 03, 48, 70, 71 |
| F20S | 01, 02, 03 | F49 | 01, 02, 03 |
| J20S | 01, 02, 03, 48, 70, 71 | J49 | 01, 02, 03, 48, 70, 71 |
| F10 | 01, 02, 03 | | |



*Naturalized



They're Coming Fast Down the Track!

Fastrac® Minnow

Great Lakes anglers have seen trolling lures come and go. Rebel's Fastrac® series, however, has remained a trolling standard since their introduction. Their angled bills give the tight action and high speed trolling ability that other lures just can't match.

| Model | Name | Size (In) | Size (cm) | Weight (oz) | Weight (g) | Hook Size | Cranking Depth (ft) | Trolling Depth (ft) |
|-------|------------------|-----------|-----------|-------------|------------|-----------|---------------------|---------------------|
| FTJ3 | Jointed Fastrac® | 5 1/2 | 13.97 | 1/2 | 20 | #2 | 5-7 | 14.5 |
| FTJ2 | Jointed Fastrac® | 4 1/2 | 11.40 | 3/8 | 13 | #4 | 5-7 | 13.5 |

*depths are approximate and obtained using 10lb test Silver Thread® line at 120 feet back

Model Colors Available

FTJ3 01, 03, 15SS, 39, 56, 92SS, 93SS

FTJ2 01, 02, 03, 15SS, 39, 56, 92SS, 93SS, 419



01 Silver/Black

02 Gold/Black

03 Silver/Blue

15SS Chrome/Blue/Silver

39 Gold/Org Back

56 Fire Tiger

92SS Chartreuse Orange

93SS Chartreuse Green

419 Bleeding Alewife

When Appearance is at a Premium.



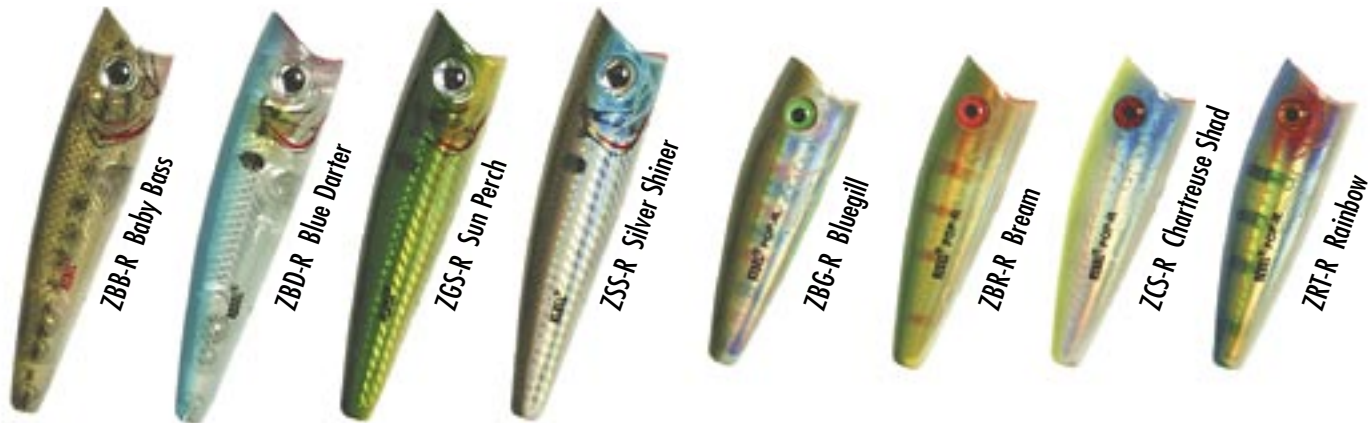
Premium Pop-R®

These surface poppers produce just the right "spit" and sound as they dance across the water's surface. Realistic appearance, super design, terrific action and XCalibur® Tx3™ Rotating Treble Hooks bring the Premium Pop-R® to life and the fish to action.

REBEL

| Model | Name | Size (In) | Size (cm) | Weight (oz) | Weight (g) | Hook Size | Cranking Depth (ft) |
|-------|--------------|-----------|-----------|-------------|------------|-----------|---------------------|
| P66 | Super Pop-R® | 3 1/8 | 6.66 | 5/16 | 8.7 | #4 | topwater |
| P60E | Pop-R® | 2 1/2 | 6.35 | 1/4 | 7.0 | #6 | topwater |

| Model | Name | Colors Available |
|-------|--------------|----------------------------|
| P66 | Super Pop-R® | ZBB-R, ZBD-R, ZGS-R, ZSS-R |
| P60E | Pop-R® | ZBG-R, ZBR-R, ZCS-R, ZRT-R |



Often Imitated, Never Duplicated.

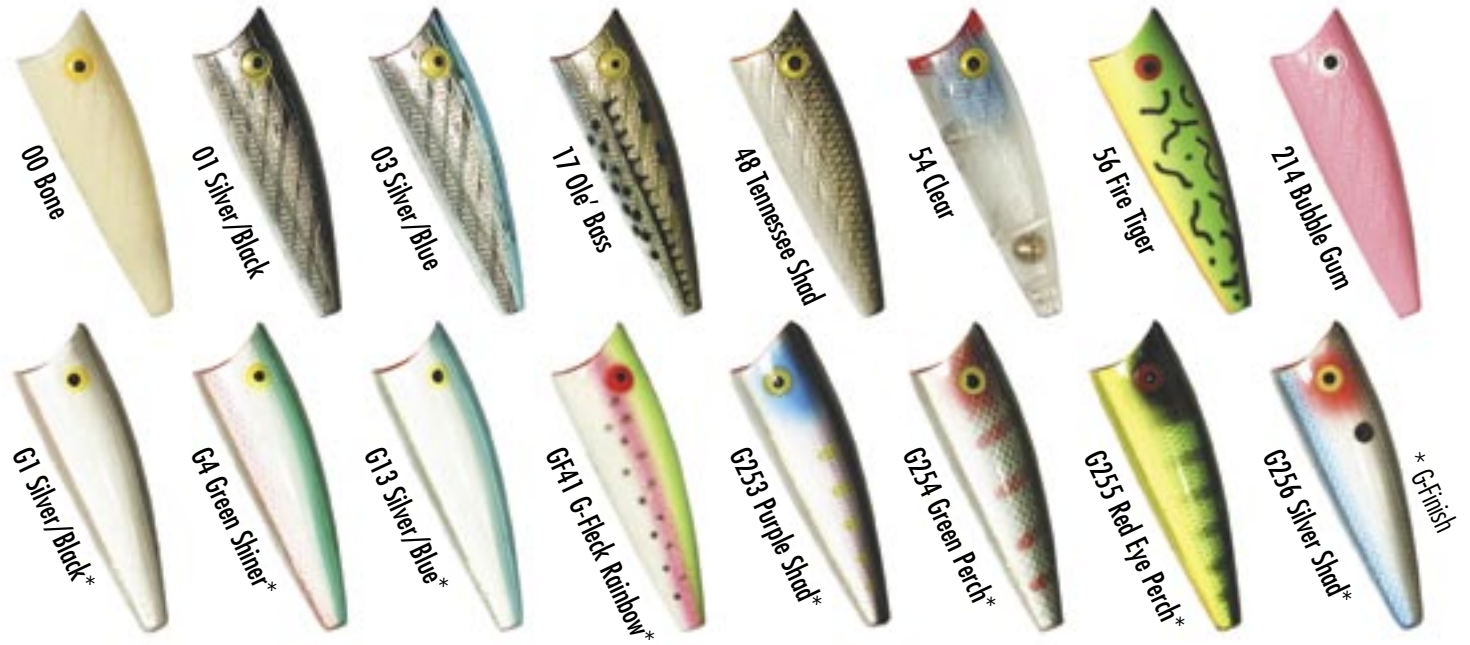


| Model | Name | Size (In) | Size (cm) | Weight (oz) | Weight (g) | Hook Size | Cranking Depth (ft) |
|-------|---------------|-----------|-----------|-------------|------------|-----------|---------------------|
| P65 | Magnum Pop-R® | 3 | 7.62 | 1/2 | 14.0 | #4 | topwater |
| P61 | Pop-R® Plus | 2 1/2 | 6.35 | 1/4 | 7.6 | #6 | topwater |
| P60 | Pop-R® | 2 1/2 | 6.35 | 1/4 | 7.8 | #6 | topwater |
| P50 | Small Pop-R® | 2 | 5.08 | 1/8 | 3.5 | #8 | topwater |

Pop-R®

Often copied, but never matched, the Rebel Pop-R® remains the standard by which all other topwater poppers are judged. Don't be fooled by the imitations. These are the original Pop-R's.

| Model | Name | Colors Available |
|-------|---------------|--|
| P65 | Magnum Pop-R® | 00, 01, 03, 17, 48, 54, 56, G253, G254 |
| P61 | Pop-R® Plus | G253, G254, G255, G256 |
| P60 | Pop-R® | 00, 01, 03, 17, 48, 54, 56, 214, G1, G4, G13, GF41 |
| P50 | Small Pop-R® | 00, 01, 03, 17, 48, 54, 56, GF41 |





F86

F85

Never Spit In the Wind... Cast a Wind-cheater® into it.

Wind-cheater®

Wind-cheater® minnows are known for distance and accuracy. Their stability, durability and extra-strong hardware make these baits ideal for both saltwater and freshwater.

| Model | Name | Size (In) | Size (cm) | Weight (oz) | Weight (g) | Hook Size | Cranking Depth (ft) |
|-------|---------------|-----------|-----------|-------------|------------|-----------|---------------------|
| F86 | Wind-cheater® | 6 | 15.24 | 1 7/8 | 52.5 | 3/0 | 0-8* |
| F85 | Wind-cheater® | 4 1/2 | 11.4 | 3/4 | 21.0 | #2 | 0-6* |

*depths are approximate and obtained using 12lb test Silver Thread® line

| Model | Colors Available |
|-------|-------------------------------------|
| All | 01, 03, 41, 223, 225, 228, 230, 258 |

REBEL

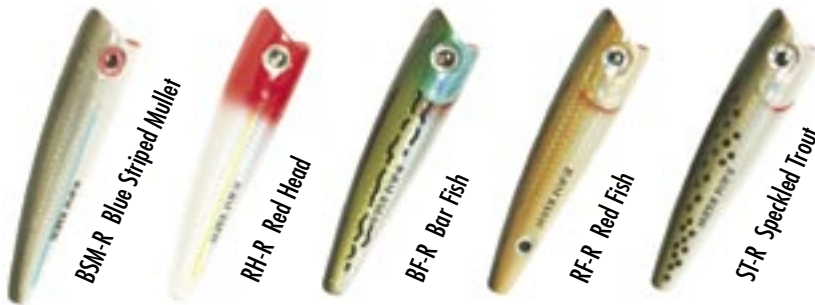


Take It to the Sea



| Model | Name | Size (In) | Size (cm) | Weight (oz) | Weight (g) | Hook Size | Cranking Depth (ft) |
|-------|-------------------|-----------|-----------|-------------|------------|-----------|---------------------|
| P66 | Salt Super Pop-R® | 3 1/8 | 6.66 | 5/16 | 8.7 | #6 | topwater |

| Model | Colors Available |
|-------|-------------------------------|
| P66 | BSM-R, RH-R, BF-R, RF-R, ST-R |



Saltwater Super Pop-R®

The Rebel® Saltwater Super Pop-R® brings to saltwater angling the same rod-busting action the legendary Pop-R® has been bringing to freshwater anglers for a quarter of a century. It's built saltwater-tough with heavy-duty hardware and super-tough finish. It takes the punishment hard-charging saltwater angling dishes out... and waits for more!



LWRBH1



UW10373

| Item # | Description |
|---------|--|
| LWRBH1 | Structured Hat. Low profile. 3-D Embroidered logo. Adjustable fit. From the makers of The Game® caps |
| UW10373 | Banner. Made of white, weatherproof Tyvek®. Grommet in each corner. Color logo printed with weather resistant ink. |

| Rebel Product | Specie | | | | | | | |
|--------------------|--------|---------|---------|--------|-------|-----------|-----------|------------|
| | Bass | Panfish | Walleye | Salmon | Trout | Steelhead | Saltwater | Musky/Pike |
| Big Ant | • | • | | | • | | | |
| Bumble Bug | • | • | | | • | | | |
| Buzz'n Frog | • | | | | | | | |
| Cat'r Crawler | • | • | | | • | | | |
| Crawfish | • | • | | | • | | | |
| Crickhopper | • | • | | | • | | | |
| Crickhopper Popper | • | • | | | • | | | |
| Fastrac Minnow | • | | • | • | | | | |
| Ghost Minnow | • | • | | | • | | | |
| Hellgrammite | • | • | | | • | | | |
| Humpback | • | | | | | | | |
| Jumpin' Minnow | • | | | | | | • | • |
| Minnows | • | • | • | • | • | • | • | • |
| Pop-R | • | | | | | | • | • |
| Spoonbill Minnow | • | | • | | | | | • |
| Tadfy | • | • | | | • | | | |
| Wee Frog | • | • | | | • | | | |
| Wee-R | • | | | | | | | |
| Wind-cheater | | | | | | | • | • |
| Trackdown Minnow | • | • | | | • | | | |



America's Favorite Fishing Lures

Rebel Lure Company
 PRADCO-Fishing
 3601 Jenny Lind Road • Fort Smith, AR 72901
 Phone: 479-782-8971 • Fax: 479-783-0234
www.RebelLures.com



Printed in the U.S.A. ©Copyright 2006
 All patents and trademarks in this catalog are property of EBSCO Industries.